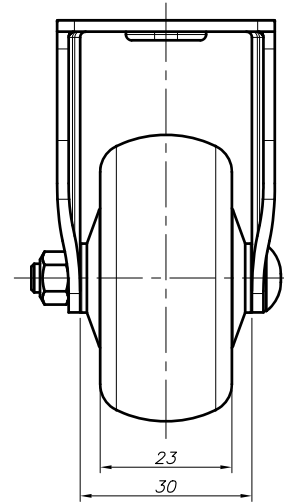
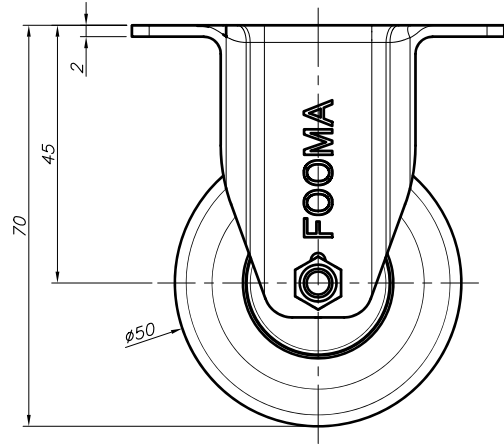
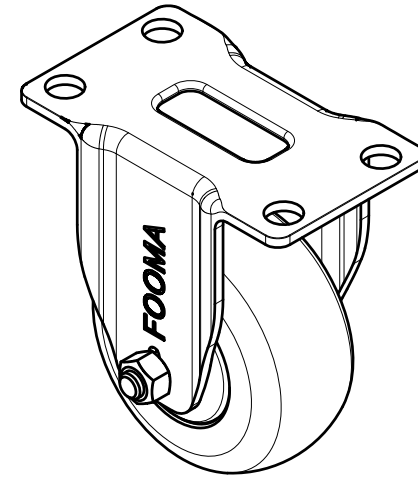
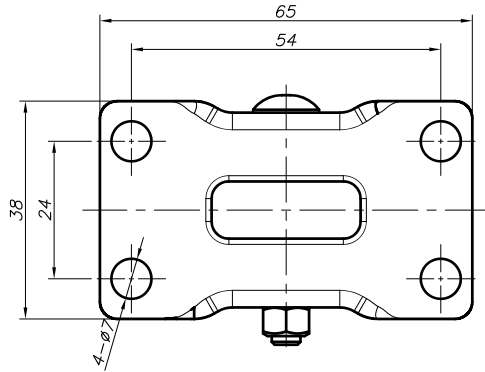


REV. NO.	DATE	DESCRIPTION	APP'D	REMARKS
▲	-	-	-	-

A  
B  
C  
E  
F  
G



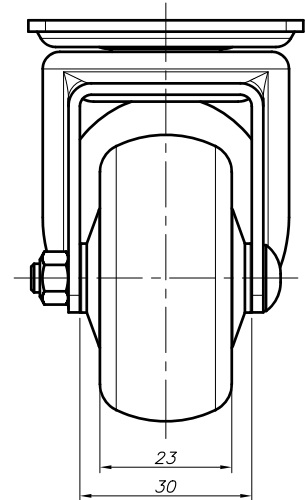
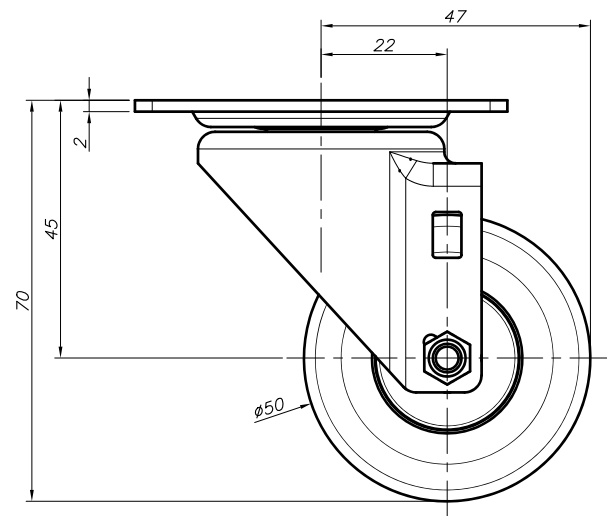
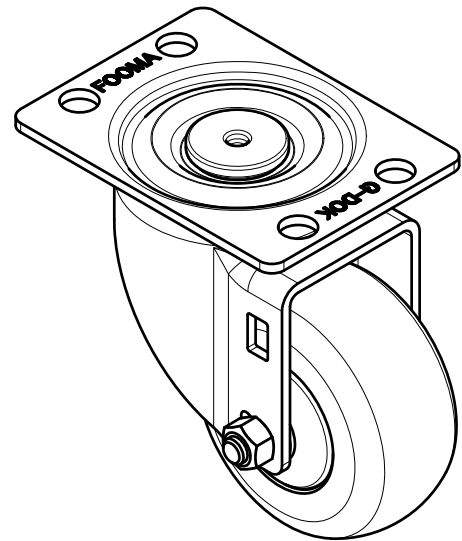
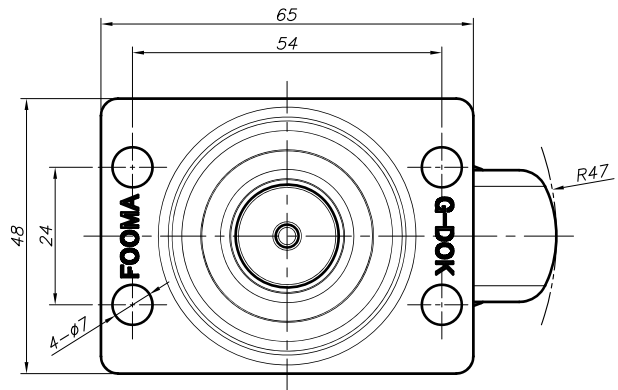
NOTE  
※ 1) --

NO.	DESCRIPTION	UNIT	Q'TY	MATERIAL	WEIGHT	SPECIFICATION	REMARKS
--	--	-	-	-	-	-	-

PROCESS		---		GENERAL TOLERANCE													
MATERIAL		---		MACHINING WORKING			DIE CASTING			INJECTION MOLDING			PRESS WORKING				
APPROVED BY		CHECKED BY		DRAWN BY		CASTER HEIGHT		WHEEL OUTER DIAMETER		WHEEL HUB WIDTH		FINISH		TOLERANCE			
O.C.K	J.Y.H	J.Y.S				0.5 - 6	±0.05	±0.1	0.5 - 6	±0.05	±0.1	0.5 - 6	±0.05	±0.1	0.5 - 6	±0.05	±0.1
						6 - 30	±0.1	±0.2	0.5 - 6	±0.05	±0.1	0.5 - 6	±0.05	±0.1	0.5 - 6	±0.05	±0.1
						30 - 120	±0.15	±0.3	0.5 - 6	±0.05	±0.1	0.5 - 6	±0.05	±0.1	0.5 - 6	±0.05	±0.1
						120 - 400	±0.2	±0.5	0.5 - 6	±0.05	±0.1	0.5 - 6	±0.05	±0.1	0.5 - 6	±0.05	±0.1
						400 - 1000	±0.3	±0.8	0.5 - 6	±0.05	±0.1	0.5 - 6	±0.05	±0.1	0.5 - 6	±0.05	±0.1

SERIES NAME		GL-SERIES		DATE		2024.01.11		GSN NO.		-	
PRODUCT NAME		GL-50-ARF-EUS		SCALE		1/1		DWG. NO.		-	
PART NAME		ASSEMBLY		WEIGHT		--		REVISION		-	
FOOT MASTER®								FOOMA®		G-DOK IND.	
GENERAL TOLERANCE		--		ANGLE		▲		SIZE		A3	

REV. NO.	DATE	DESCRIPTION	APP'D	REMARKS
▲	-	-	-	-



NOTE  
※ 1) --

PROCESS		MATERIAL		APPROVED BY		CHECKED BY		DRAWN BY	
---		---		O.C.K		J.Y.H		J.Y.S	

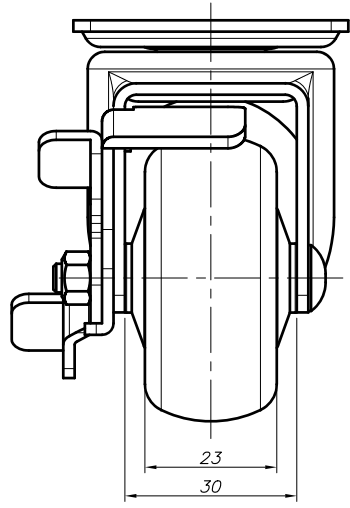
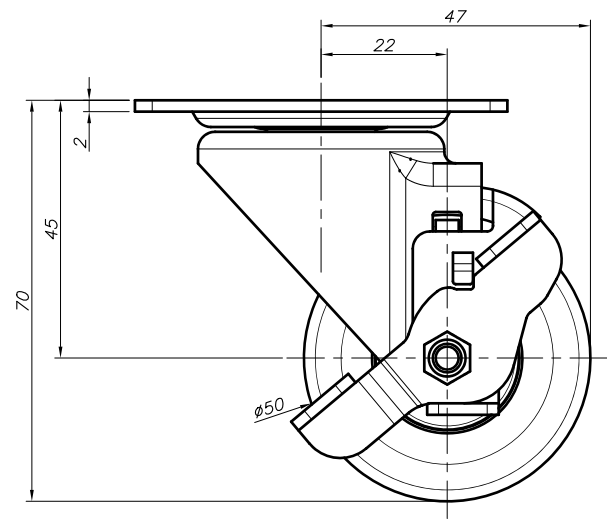
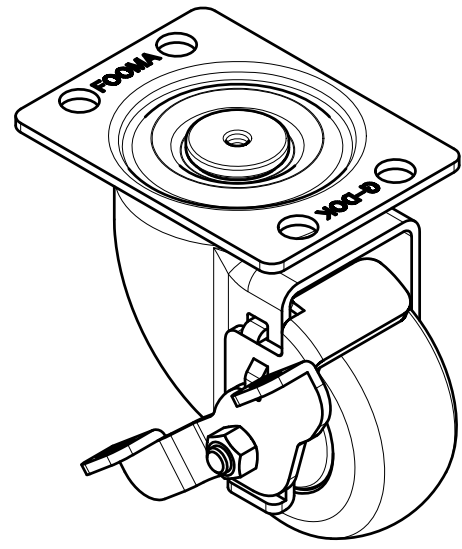
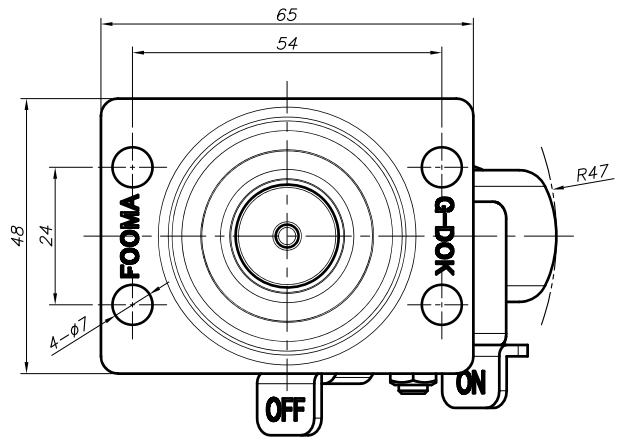
GENERAL TOLERANCE		CHAMFER		D.S		ROAD		D.S		UNIT		mm	
MACHINING WORKING		DIE CASTING		INJECTION MOLDING		PRESS WORKING							
FINISH	PRECISION	GENERAL	FINISH	PRECISION	GENERAL	FINISH	PRECISION	GENERAL	FINISH	PRECISION	GENERAL	FINISH	PRECISION
0.5 - 6	±0.05	±0.1	1-10	±0.1	±0.1	1-10	±0.1	±0.1	1-10	±0.1	±0.1	1-10	±0.1
6 - 30	±0.1	±0.2	10-30	±0.1	±0.2	10-30	±0.1	±0.2	10-30	±0.1	±0.2	10-30	±0.1
30 - 120	±0.15	±0.3	30-120	±0.15	±0.3	30-120	±0.15	±0.3	30-120	±0.15	±0.3	30-120	±0.15
120 - 400	±0.2	±0.5	120-400	±0.2	±0.5	120-400	±0.2	±0.5	120-400	±0.2	±0.5	120-400	±0.2
400 - 1000	±0.3	±0.8	400-1000	±0.3	±0.8	400-1000	±0.3	±0.8	400-1000	±0.3	±0.8	400-1000	±0.3

PRODUCT GENERAL TOLERANCE		WHEEL OUTER DIAMETER		WHEEL HUB BORE	
PRECISION	GENERAL	PRECISION	GENERAL	PRECISION	GENERAL
±0.05	±1% (MIN:0.1mm)	±0.05	±1% (MIN:0.1mm)	±0.05	±1% (MIN:0.1mm)
±0.1	±1% (MIN:0.1mm)	±0.1	±1% (MIN:0.1mm)	±0.1	±1% (MIN:0.1mm)
±0.2	±1% (MIN:0.1mm)	±0.2	±1% (MIN:0.1mm)	±0.2	±1% (MIN:0.1mm)

FOOT MASTER®		FOOMA®		G-DOK IND.	
SERIES NAME	GL-SERIES	DATE	2024.01.11	GSN NO.	-
PRODUCT NAME	GL-50-ASF-EUS	SCALE	1/1	DWG. NO.	-
PART NAME	ASSEMBLY	WEIGHT	--	REVISION	SIZE A3
		GENERAL TOLERANCE	--	ANGLE	▲

FOOT MASTER G-DOK IND.

REV. NO.	DATE	DESCRIPTION	APP'D	REMARKS
▲	-	-	-	-



NOTE

※ 1) --

NO.	DESCRIPTION	UNIT	Q'TY	MATERIAL	WEIGHT	SPECIFICATION	REMARKS
--	--	--	--	--	--	--	--

PROCESS	MATERIAL	APPROVED BY	CHECKED BY	DRAWN BY	GENERAL TOLERANCE																										
---	---	O.C.K	J.Y.H	J.Y.S	PRODUCT GENERAL TOLERANCE																										
					CASTER HEIGHT			WHEEL OUTER DIAMETER			WHEEL HUB WIDTH			MACHINING WORKING			DIE CASTING			INJECTION MOLDING			PRESS WORKING								
					0.5 - 6	±0.05	±0.1	0.5 - 30	±0.1	±0.2	30 - 120	±0.15	±0.3	0.5 - 6	±0.05	±0.1	0.5 - 30	±0.1	±0.2	30 - 120	±0.15	±0.3	0.5 - 6	±0.05	±0.1	0.5 - 30	±0.1	±0.2	30 - 120	±0.15	±0.3
					±0.05K (0.025mm)	±1% (0.025mm)	±0.05K (0.025mm)	±1% (0.025mm)	±0.05K (0.025mm)	-1% (0.025mm)	-2% (0.025mm)	0.5 - 6	±0.05	±0.1	0.5 - 30	±0.1	±0.2	30 - 120	±0.15	±0.3	0.5 - 6	±0.05	±0.1	0.5 - 30	±0.1	±0.2	30 - 120	±0.15	±0.3		

FOOT MASTER®		FOOMA®		G-DOK IND.	
SERIES NAME	GL-SERIES	DATE	2024.01.11	GSN NO.	-
PRODUCT NAME	GL-50-BSF-EUS	SCALE	1/1	DWG. NO.	-
PART NAME	ASSEMBLY	WEIGHT	--	REVISION	SIZE A3
		GENERAL TOLERANCE	--	ANGLE	▲

FOOT MASTER G-DOK IND.