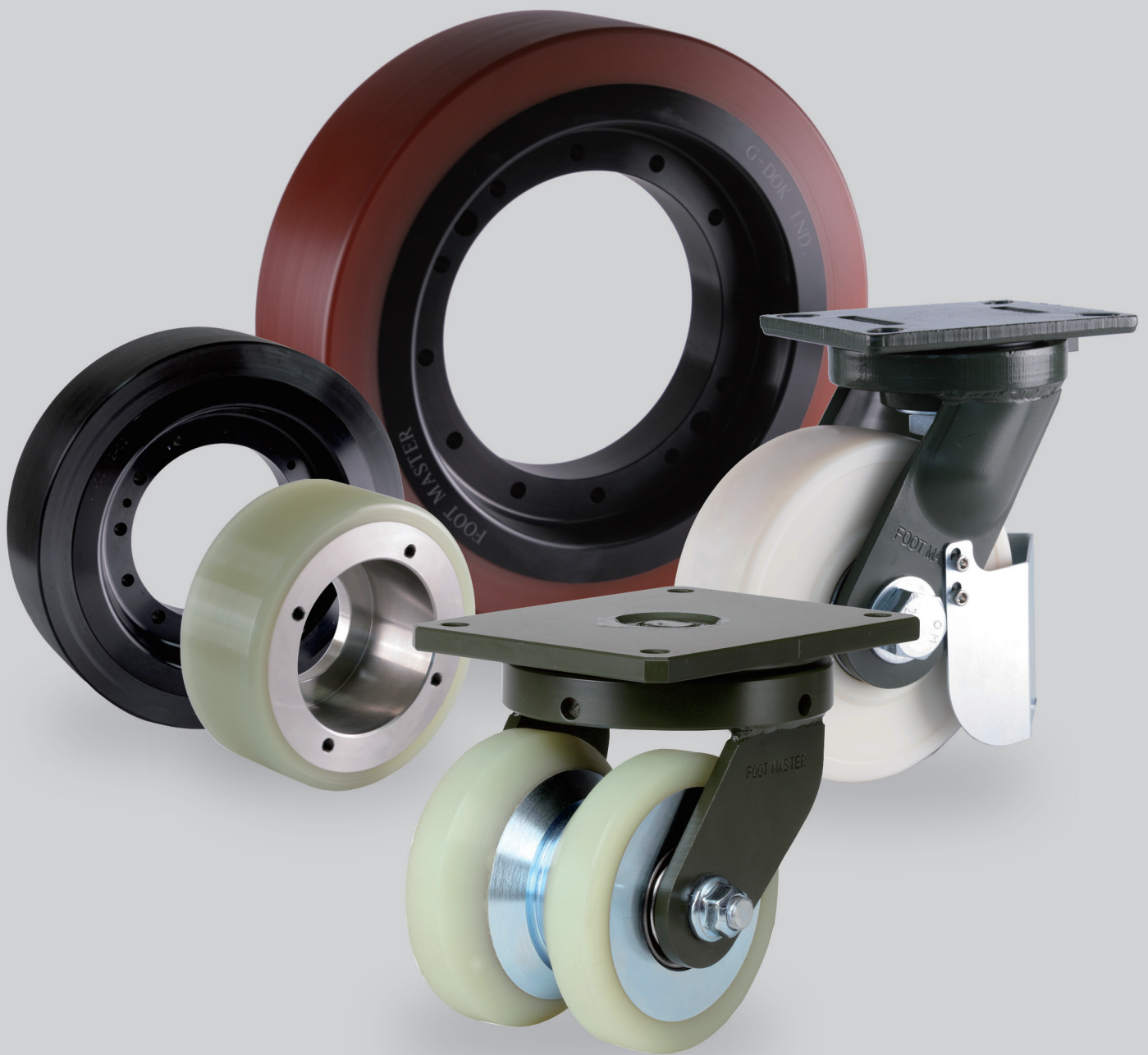


The Pride of Top Quality  
**FOOT MASTER®**

---

# Custom-made Casters, Wheels

---



Customized casters

## SPECIAL CASTERS

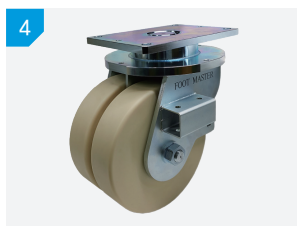
 50~15,000kg

 RoHS

Our customized caster is a product whose superiority was verified by being applied to the cutting-edge lines of domestic and overseas prominent enterprises requiring a strict clean class, and provides the best solution at any requirement condition of customers based on our over 20 years of technology experiences.

### Scope of utilization

- Automated guided vehicle caster in the cutting-edge electronic industry such as semiconductor lines and LCD lines
- Various logistics equipment operated at severe conditions(AGV, LGV, RGV, etc.)
- Caster for ultra-high load equipment in shipbuilding/heavy industry and steel making industry
- Caster for other equipment and carts requiring special functions



### Polyurethane products of various performances

- MDI / TDI
- PPDI  High-end urethane products
- NDI
- Anti-static(ESD) 

### Ultra heavy duty caster | AGV/AMR caster

- Optimal design reflecting the requirements of customers
- Robust structure with very outstanding durability and minimized noise generation
- Free caster for AGV equipment operated for 24 hours
- Coping with characteristics of high speed equipment and high load equipment, by using various kinds of urethane(TDI, PPDI, NDI)


### AGV/AMR caster | Special-purpose caster

- Free caster for AGV equipment operated for 24 hours
- Caster for transportation of large containers
- Directional lock, steering device, bolt brake

### Special-purpose caster | AGV/AMR caster

- Caster for simulator equipment moving on rails
- V-type wheel, directional lock, high-hardness urethane use
- Tilt type AGV/AMR caster(MAX:9° TILT)
- Tilt function to be used in uneven road surface environments

### Special-purpose caster | Heat-resistant shock-absorbing caster

- Vertical swivel caster
- Heat resistant shock-absorbing caster
- Outstanding effect of protecting cargos at a high-temperature environment
- Cart/equipment for high-temperature processes of semiconductors:  250°C

Customized casters

# SPECIAL CASTERS

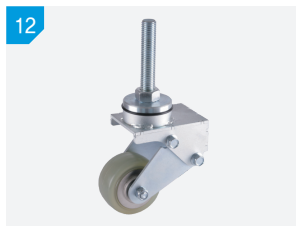
 50~15,000kg

 RoHS



### Leveling caster | shock-absorbing caster

- Leveling caster(Height adjusting function after movement of equipment)
- Shock-absorbing caster(GRIP RING STEM)



### Leveling caster | Shock absorbing caster

- Heavy duty leveling caster(Up to TM44 screw standard)
- Shock-absorbing leveling caster



### Heavy duty caster

- Fixed brake caster
- Caster with rotatable scrapers



### Special-purpose caster

- U-angle caster for salt farms(Vertical rotation, stainless product)
- Low-height medium duty caster(Goliath crane rotation equipment)



### AGV/AMR caster

- Free caster for AGV equipment operated for 24 hours
- Usable in uneven road surface environments, as a shock-absorbing type

Customized wheels

# High Quality TDI Wheels

 50~8,000kg

 RoHS

TDI product group suitable for various applications with excellent dynamic characteristics. Ether or ester material with high tensile strength and tear strength to have an excellent dynamic characteristic.

<p>1</p>  <p>AGV/AMR drive wheel D200 x W100(STEEL CORE)</p>	<p>2</p>  <p>AGV/AMR drive wheel D150 x W50(AL CORE)</p>	<p>3</p>  <p>Stocker drive wheel   AGV/AMR drive wheel D500 x W170(AL CORE)   D300 x W120(STS CORE)</p>	
<p>4</p>  <p>AGV/AMR guide wheel D200 x W40(AL CORE)</p>	<p>5</p>  <p>Robot drive wheel D100 x W25(AL CORE)</p>		
<p>6</p>  <p>LGV guide wheel D250 x W180(STEEL CORE)</p>	<p>7</p>  <p>OHT drive wheel D100 x W25(AL CORE)</p>	<p>8</p>  <p>Conveyor roller D70 x W30(STEEL CORE)</p>	<p>9</p>  <p>Conveyor roller D200 x W50(STEEL CORE)</p>
<p>10</p>  <p>Roller D80 x W50(STEEL CORE)</p>	<p>11</p>  <p>Robot wheel D100 x W25(AL CORE)</p>	<p>12</p>  <p>Robot drive wheel D100 x W30(STEEL CORE)</p>	<p>13</p>  <p>Robot drive wheel D200 x W40(AL CORE)</p>
<p>14</p>  <p>Forklift roller D80 x W120(STS CORE)</p>	<p>15</p>  <p>Guide wheel D60 x W25(AL CORE)</p>	<p>16</p>  <p>Chemical resistance wheel D200 x W60(STEEL CORE)</p>	<p>17</p>  <p>Cam follower   Guide wheel D50 x W20(STEEL CORE)</p>

Customized wheels

# Premium PPDI / NDI Wheels



50~8,000kg



Our customized wheel is a product whose superiority was verified by being applied to the cutting-edge lines of domestic and overseas prominent enterprises requiring a strict clean class, and provides the best solution at any requirement condition of customers based on our over 20 years of technology experiences.



### Premium PPDI / NDI product characteristics

- Excellent dynamic characteristics(usable for long time)
- Has high tear strength to have very high durability against tearing
- Fast restoring force during operation after a stop(high repulsive elasticity)
- Has high durability of abrasion to minimize generation of particles(Suitable for clean rooms)
- Anti-static( $10^8 \sim 10^9 \Omega \text{cm}$ ) ⚡

### Manufactured with various sizes(D50~D550)

### Scope of utilization

- Drive and guide wheel for high load equipment
- Drive wheel for equipment operated at a high speed
- Drive and guide wheel for various logistics equipment (STOCKER, AGV, LGV, RGV, OHT, SHUTTLE, ROLLER)



Customized wheels

# Premium PPDI / NDI Wheels

 50~8,000kg

 RoHS

Has high durability of abrasion and high strength of tear to make generation of particles low and have high durability against cracks. Has high repulsive elasticity to exert fast recovery force even after a long-time stop and has excellent dynamic characteristics even in a severe condition.

<p>10</p>  <p>Stocker drive wheel(PPDI) D350 x W140(AL CORE)</p>	<p>11</p>  <p>Stocker guide wheel(PPDI) D60 x W25(AL CORE)</p>	<p>12</p>  <p>Stocker drive wheel(PPDI + ESD) D520 x W190(AL CORE)</p>	
<p>13</p>  <p>Stocker drive wheel(PPDI + ESD) D300 x W60(AL CORE)</p>	<p>14</p>  <p>LGV drive wheel(PPDI) D230 x W80(STEEL CORE)</p>		
<p>15</p>  <p>Stocker drive wheel(PPDI + ESD) D500 x W170(AL CORE)</p>	<p>16</p>  <p>OHT · OHS drive wheel(PPDI) D76 x W21(AL CORE)</p>	<p>17</p>  <p>OHT · OHS drive wheel(NDI) D125 x W16(AL CORE)</p>	<p>18</p>  <p>OHT · OHS drive wheel(NDI) D115 x W20(AL CORE)</p>
<p>19</p>  <p>OHT drive wheel(PPDI) D115 x W20(AL CORE)</p>	<p>20</p>  <p>OHT · OHS drive wheel(NDI) D100 x W25(AL CORE)</p>	<p>21</p>  <p>OHT · OHS drive wheel(NDI) D76 x W21(AL CORE)</p>	<p>22</p>  <p>OHT · OHS drive wheel(NDI) D115 x W20(AL CORE)</p>
<p>23</p>  <p>OHT guide wheel(PPDI + ESD) D60 x W21(AL CORE)</p>	<p>24</p>  <p>Anti-static wheel(PPDI + ESD) D75 x W30(AL CORE)</p>	<p>25</p>  <p>Stocker drive wheel(PPDI + ESD) D240 x W60(AL CORE)</p>	<p>26</p>  <p>Stocker drive wheel(PPDI + ESD) D400 x W120(AL CORE)</p>