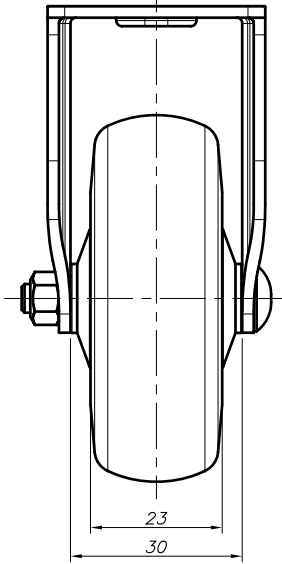
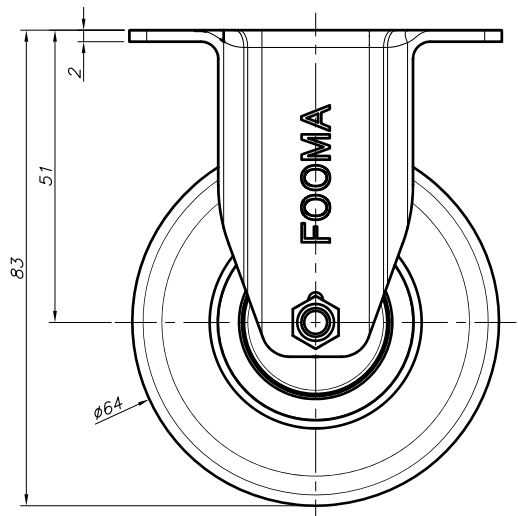
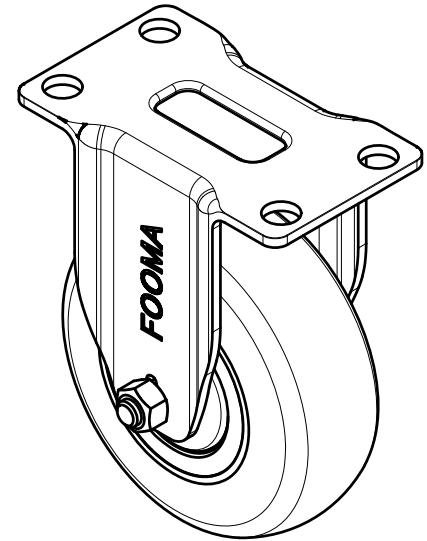
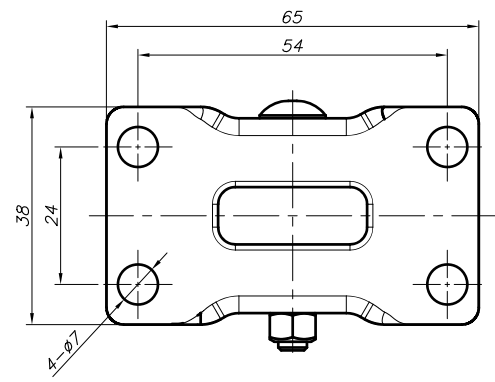


REV. NO.	DATE	DESCRIPTION	APP'D	REMARKS
▲	-	-	-	-



NOTE
 ※ 1) --

PROCESS		MATERIAL		APPROVED BY		CHECKED BY		DRAWN BY	
---		---		O.C.K		J.Y.H		J.Y.S	

GENERAL TOLERANCE									
MACHINING WORKING		DE CASTING		INJECTION MOLDING		PRESS WORKING		UNIT	
MINUS	PRECISION	MINUS	PRECISION	MINUS	PRECISION	MINUS	PRECISION	mm	mm
0.5 - 6	±0.05	±0.1	1-10	±0.1	1-10	±0.1	1-10	mm	mm
6 - 30	±0.1	±0.2	10-30	±0.2	10-30	±0.2	10-30	mm	mm
30 - 120	±0.15	±0.3	30-120	±0.3	30-120	±0.3	30-120	mm	mm
120 - 400	±0.2	±0.5	120-400	±0.5	120-400	±0.5	120-400	mm	mm
400 - 1000	±0.3	±0.8	400-1000	±0.8	400-1000	±0.8	400-1000	mm	mm

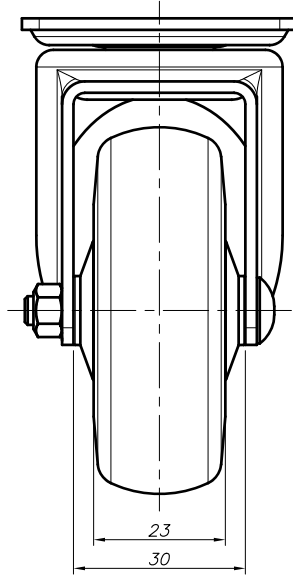
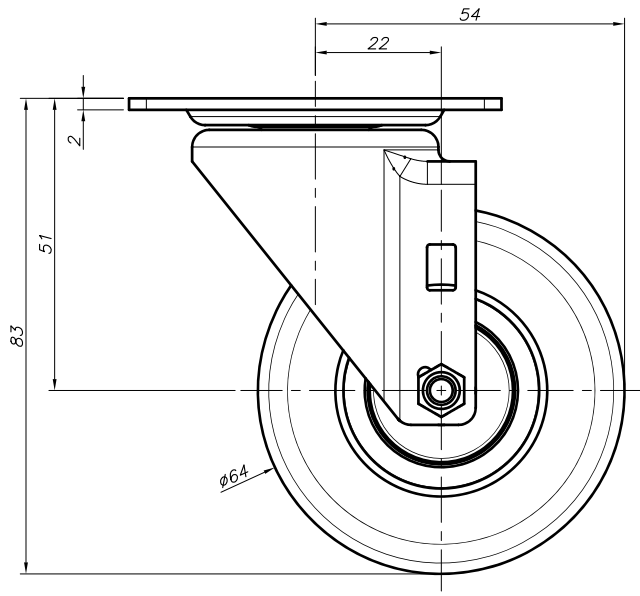
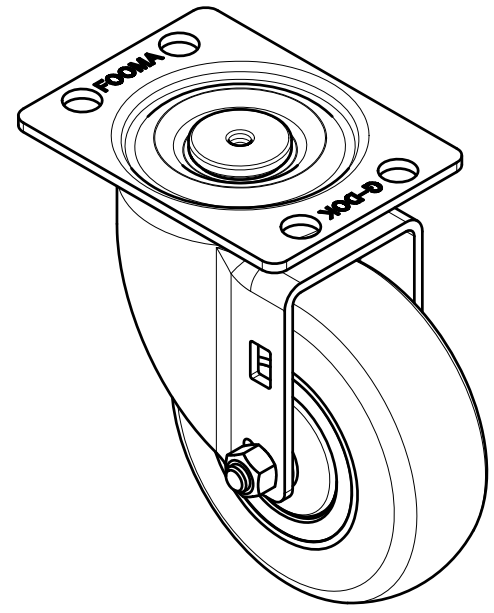
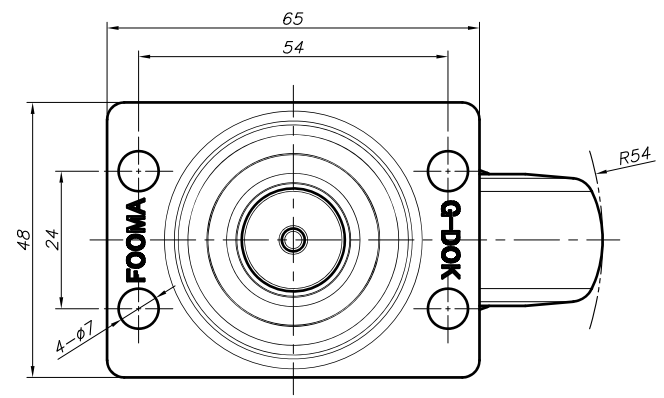
PRODUCT GENERAL TOLERANCE									
CASTER HEIGHT		WHEEL OUTER DIAMETER		WHEEL HUB WIDTH					
PRECISION	GENERAL	PRECISION	GENERAL	PRECISION	GENERAL				
±0.5K	±1K	±0.5K	±1K	-1K	-2K				
(MINUS)	(MINUS)	(MINUS)	(MINUS)	(MINUS)	(MINUS)				

NO.	DESCRIPTION	UNIT	Q'TY	MATERIAL	WEIGHT	SPECIFICATION	REMARKS
--	--	-	-	-	-	-	-

FOOT MASTER®		FOOMA®		G-DOK IND.	
SERIES NAME	GL-SERIES	DATE	2024.01.11	GSN NO.	-
PRODUCT NAME	GL-65-ARF-EUS	SCALE	1/1	DWG. NO.	-
PART NAME	ASSEMBLY	WEIGHT	--	REVISION	SIZE A3
GENERAL TOLERANCE		--	ANGLE		▲

FOOT MASTER G-DOK IND.

REV. NO.	DATE	DESCRIPTION	APP'D	REMARKS
▲	-	-	-	-



NOTE

※1) --

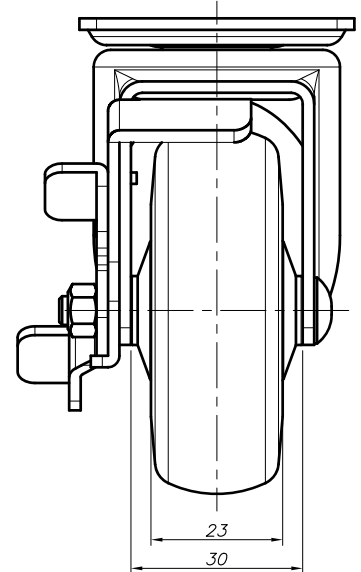
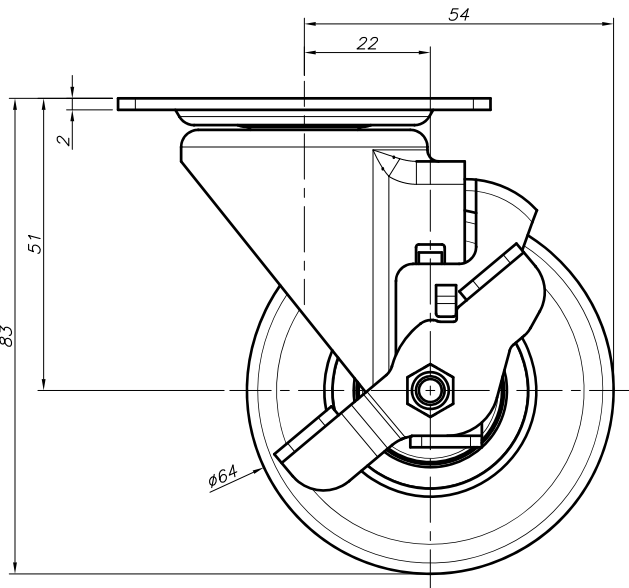
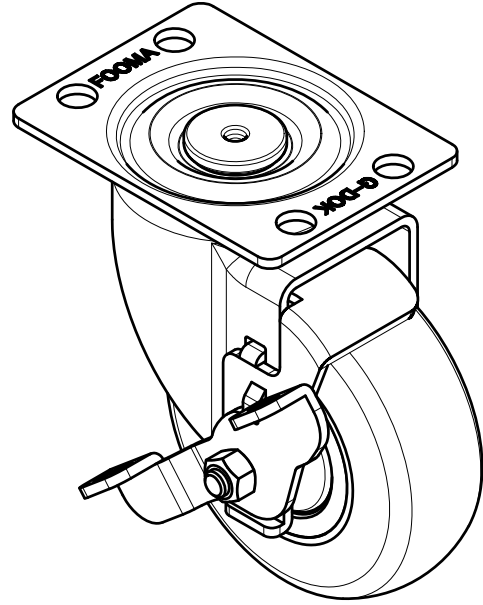
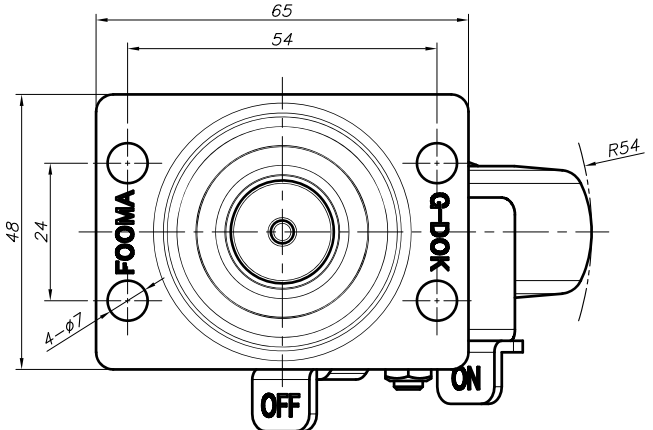
PROCESS			GENERAL TOLERANCE																	
MATERIAL			MACHINING WORKING				DIE CASTING				INJECTION MOLDING				PRESS WORKING					
APPROVED BY			DIMENSIONS		SURFACE		DIMENSIONS		SURFACE		DIMENSIONS		SURFACE		DIMENSIONS		SURFACE			
O.C.K	J.Y.H	J.Y.S	0.5-6	±0.05	±0.1	1-3	±0.05	±0.1	1-3	±0.05	±0.1	1-3	±0.05	±0.1	1-3	±0.05	±0.1	1-3		
PRODUCT GENERAL TOLERANCE			CASTER HEIGHT		WHEEL OUTER DIAMETER		WHEEL HUB WIDTH		CASTER HEIGHT		WHEEL OUTER DIAMETER		WHEEL HUB WIDTH		CASTER HEIGHT		WHEEL OUTER DIAMETER			
			6-30		±0.1		±0.2		3-10		±0.1		±0.2		3-10		±0.1		±0.2	
			120-400		±0.2		±0.5		10-30		±0.1		±0.2		10-30		±0.1		±0.2	
			400-1000		±0.3		±0.8		10-30		±0.1		±0.2		10-30		±0.1		±0.2	

NO.		DESCRIPTION	UNIT	Q'TY	MATERIAL	WEIGHT	SPECIFICATION	REMARKS
--		--	--	--	--	--	--	--

SERIES NAME		GL-SERIES	DATE	2024.01.11	GSN NO.	-
PRODUCT NAME		GL-65-ASF-EUS	SCALE	1/1	DWG. NO.	-
PART NAME		ASSEMBLY	WEIGHT	--	REVISION	SIZE A3
		GENERAL TOLERANCE	--	ANGLE		▲

FOOT MASTER G-DOK IND. FOOT MASTER G-DOK IND.

REV. NO.	DATE	DESCRIPTION	APP'D	REMARKS
▲	-	-	-	-



NOTE
 ※1) --

PROCESS		MATERIAL		APPROVED BY		CHECKED BY		DRAWN BY	
---		---		O.C.K		J.Y.H		J.Y.S	

GENERAL TOLERANCE									
MACHINING WORKING		DIE CASTING		INJECTION MOLDING		PRESS WORKING			
FINISH	PRECISION (μ)	GENERAL (μ)	FINISH (μ)	PRECISION (μ)	GENERAL (μ)	FINISH (μ)	PRECISION (μ)	GENERAL (μ)	FINISH (μ)
0.5 - 6	±0.05	±0.1	1-10	±0.1	±0.2	1-10	±0.1	±0.2	1-10
6 - 30	±0.1	±0.2	30 - 120	±0.15	±0.3	30 - 120	±0.15	±0.3	30 - 120
120 - 400	±0.2	±0.5	400 - 1000	±0.3	±0.8	120 - 400	±0.2	±0.5	400 - 1000

PRODUCT GENERAL TOLERANCE			
CASTER HEIGHT	WHEEL OUTER DIAMETER	WHEEL HUB BORE	WHEEL HUB BORE
±0.5K (MIN±0.3mm)	±1K (MIN±0.5mm)	±0.5K (MIN±0.3mm)	±1K (MIN±0.5mm)

NO.	DESCRIPTION	UNIT	Q'TY	MATERIAL	WEIGHT	SPECIFICATION	REMARKS
--	--	--	--	--	--	--	--

FOOT MASTER®		FOOMA®		G-DOK IND.	
SERIES NAME	GL-SERIES	DATE	2024.01.11	GSN NO.	-
PRODUCT NAME	GL-65-BSF-EUS	SCALE	1/1	DWG. NO.	-
PART NAME	ASSEMBLY	WEIGHT	--	REVISION	SIZE A3
GENERAL TOLERANCE		--	ANGLE		▲

FOOT MASTER G-DOK IND.